

Alfa Laval Pharma-line P

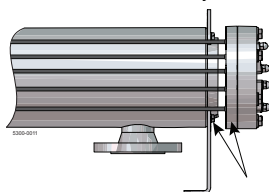
Alfa Laval Pharma-line P double tube sheet shell & tube heat exchanger

Applications

The Pharma-line P is used in pharmaceutical water systems; Water For Injection (WFI) and Purified Water (PW) and for heating or cooling of pharmaceutical products.

Working principles

The Pharma-line P is designed in accordance with FDA, USP and cGMP requirements. In the Pharma-line P the risk of mixing between the product and the heating or cooling (service) medium is eliminated as a result of the double tube sheet design. The product flows in the tubes while the service medium flows in a cross flow around the tubes, inside the shell. The service medium is sealed in the shell by the first tube sheet and the second tube sheet seals the product. In the event of a leak, the leakage of either fluid is easily visually detected.



Tube sheets

Fig. 1. Double tube sheets prevent cross contamination between the product and the heating/cooling medium.

PHYSICAL DATA

Product wetted steel parts: . . . 316L (seamless tubes)
Gaskets: PTFE (FDA compliance & USP class VI certified)
Connections: Tri-clamp on tube side and flanges on service side (other options available)

Standard range

The Alfa Laval Pharma-line is a high quality double tube sheet shell & tube heat exchanger designed for use in the pharmaceutical and biotechnology industries. It is available in a number of standard sizes and meets the stringent hygiene standard imposed both by control authorities and industry.

The Pharma-line P is available in 27 standard models, all with U-tube designs that suit most applications are readily available. Custom design units are available on request.

Within the product range Pharma-line there are 2 series available:

Pharma-line S - Standard design

Pharma-line P - Standard design and a custom design available on request

Custom made

Other design S and documentation are available on request.



TECHNICAL DATA

Heat transfer area: . . . 0.1 m² – 8.5 m², other areas available upon request
Design temperature: . . -15°C to 150°C (available up to 200°C)
Design pressure: FV/10 barg, higher pressures available
Pressure vessel codes: PED and ASME VIII (U-stamp as option), Chinese TSG and manufacturing license available
Welding: according to SS-EN ISO 15614-1, SS-EN287-1, SS-EN1418, ASME IX
Surface finish product wetted parts: Electropolished down to Ra<0.3µm. Mechanically polished with Ra<0.8 µm or Ra<0.5 µm.

По вопросам продаж и поддержки обращайтесь:

Архангельск (8182)63-90-72
Астана +7(7172)727-132
Астрахань (8512)99-46-04
Барнаул (3852)73-04-60
Белгород (4722)40-23-64
Брянск (4832)59-03-52
Владивосток (423)249-28-31
Волгоград (844)278-03-48
Волгода (8172)26-41-59
Воронеж (473)204-51-73
Екатеринбург (343)384-55-89
Иваново (4932)77-34-06
Ижевск (3412)26-03-58
Иркутск (395) 279-98-46

Казань (843)206-01-48
Калининград (4012)72-03-81
Калуга (4842)92-23-67
Кемерово (3842)65-04-62
Киров (8332)68-02-04
Краснодар (861)203-40-90
Красноярск (391)204-63-61
Курск (4712)77-13-04
Липецк (4742)52-20-81
Магнитогорск (3519)55-03-13
Москва (495)268-04-70
Мурманск (8152)59-64-93
Набережные Челны (8552)20-53-41
Нижний Новгород (831)429-08-12

Новокузнецк (3843)20-46-81
Новосибирск (383)227-86-73
Омск (3812)21-46-40
Орел (4862)44-53-42
Оренбург (3532)37-68-04
Пенза (8412)22-31-16
Пермь (342)205-81-47
Ростов-на-Дону (863)308-18-15
Рязань (4912)46-61-64
Самара (846)206-03-16
Санкт-Петербург (812)309-46-40
Саратов (845)249-38-78
Севастополь (8692)22-31-93
Симферополь (3652)67-13-56

Смоленск (4812)29-41-54
Сочи (862)225-72-31
Ставрополь (8652)20-65-13
Сургут (3462)77-98-35
Тверь (4822)63-31-35
Томск (3822)98-41-53
Тула (4872)74-02-29
Тюмень (3452)66-21-18
Ульяновск (8422)24-23-59
Уфа (347)229-48-12
Хабаровск (4212)92-98-04
Челябинск (351)202-03-61
Череповец (8202)49-02-64
Ярославль (4852)69-52-93

Киргизия (996)312-96-26-47

Казахстан (772)734-952-31

Таджикистан (992)427-82-92-69

Эл. почта: afm@nt-rt.ru || Сайт: <http://alfa-laval.nt-rt.ru>

Options:

- Passivation according to procedure
- Insulation Mineral wool (ASTM C795) with stainless steel 304 cladding
- Removable tube bundle

Hygienic design

The Pharma-line P has no dead legs and is fully drainable on the product side. All product wetted parts in the Pharma-line P are either electropolished to Ra<0.4 µm or mechanically polished to Ra<0.8 µm, Ra<0.5 µm. The Pharma-line P tubes are seamless and U-tubes are bent to a larger radius than required in ASME BPE. The Pharma-line P is easy to clean and can be steam sterilized. Gaskets come with a USP class VI certificate and are in compliance with FDA.

Documentation

The Pharma-line P is delivered along with Alfa Laval Q-Doc including:

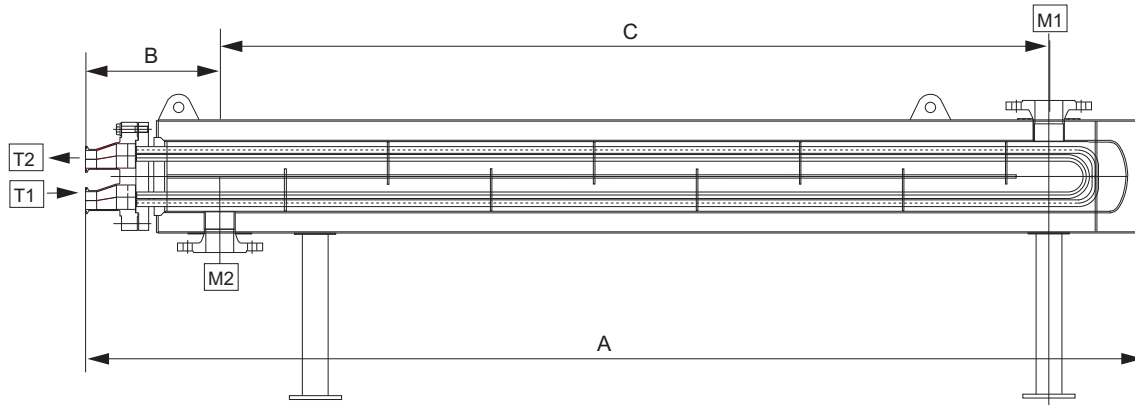
- Approved drawings and calculations signed by Notified body
- List of welders, welding procedure and welder qualification
- 3.1 Material certificates, pressure and product wetted steel parts
- FDA compliance and USP class VI certificates, gaskets
- Liquid penetrant test report and procedure
- Surface roughness certificate
- Dimension control report
- Pressure test certificate, signed by Notified body
- Identification (technical sign)
- Quality system certificate
- CE-Documents

Installation

The Pharma-line P can be installed either horizontally or vertically depending on the specific demands. For an easy installation, lugs and mounting plates are welded on the unit.

Standard units, measurements (approximate) [mm]

Type	Shell			
	OD	A	B	C
Pharma-line 1 [mm]				
Pharma-line 1 - 0.1	73	1200	180	860
Pharma-line 1 - 0.3	89	1200	190	860
Pharma-line 1 - 0.4	102	1200	190	860
Pharma-line 1 - 0.6	114	1200	200	860
Pharma-line 1 - 0.7	140	1200	210	860
Pharma-line 1 - 0.8	114	1200	200	860
Pharma-line 1 - 1.1	140	1200	210	860
Pharma-line 1 - 1.2	168	1200	220	860
Pharma-line 1 - 2.5	219	1200	253	860
Pharma-line 2 [mm]				
Pharma-line 2 - 0.3	73	2200	180	1860
Pharma-line 2 - 0.6	89	2200	190	1860
Pharma-line 2 - 1.0	102	2200	190	1860
Pharma-line 2 - 1.3	114	2200	200	1860
Pharma-line 2 - 1.4	140	2200	210	1860
Pharma-line 2 - 1.7	114	2200	200	1860
Pharma-line 2 - 2.4	140	2200	210	1860
Pharma-line 2 - 2.6	168	2200	220	1860
Pharma-line 2 - 5.5	219	2200	253	1860
Pharma-line 3 [mm]				
Pharma-line 3 - 0.4	73	3200	180	2860
Pharma-line 3 - 1.0	89	3200	190	2860
Pharma-line 3 - 1.6	102	3200	190	2860
Pharma-line 3 - 2.0	114	3200	200	2860
Pharma-line 3 - 2.2	140	3200	210	2860
Pharma-line 3 - 2.7	114	3200	200	2860
Pharma-line 3 - 3.7	140	3200	210	2860
Pharma-line 3 - 4.0	168	3200	220	2860
Pharma-line 3 - 8.5	219	3200	253	2860



Standard nozzle schedule

Clamps product side

ASME BPE/OD

DIN32676

DIN11864-3 form A

DIN 32676 (1127)

ISO2852

Flanges utility side

ANSI B16.5 (150lb)

DIN2635/EN1092-1

Nozzle schedule

Item	Service	Facing	Standard & Dimension
T1	Tube inlet	Tri-Clamp	Free
T2	Tube outlet	Tri-Clamp	Free
M1	Shell inlet	Weld neck flange	Free
M2	Shell outlet	Weld neck flange	Free



Alfa Laval Pharma-line S

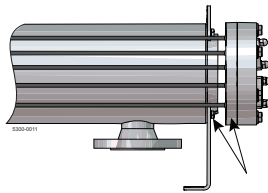
Alfa Laval Pharma-line S double tube sheet shell & tube heat exchanger

Applications

The Pharma-line S is used in pharmaceutical water systems; Water For Injection (WFI) and Purified Water (PW) and for heating or cooling of pharmaceutical products.

Working principles

The Pharma-line S is designed in line with ASME BPE, USP and cGMP requirements. In the Pharma-line the risk of mixing between the product and the heating or cooling (service) medium is eliminated as a result of the double tube sheet design. The product flows in the tubes while the service medium flows in a cross flow around the tubes, inside the shell. The service medium is sealed in the shell by the first tube sheet and the second tube sheet seals the product. In the event of a leak, the leakage of either fluid is easily visually detected.



Tube sheets

Fig. 1. Double tube sheets prevent cross contamination between the product and the heating/cooling medium.



PHYSICAL DATA

Product wetted steel parts: . . . 316L (seamless tubes)
 Gaskets: PTFE (FDA compliance & USP class VI certified)
 Connections: NAC plate to connect to tri clamp on tube side and flanges on service side

Standard range

The Alfa Laval Pharma-line is a high quality double tube sheet shell & tube heat exchanger designed for use in the pharmaceutical and biotechnology industries. It is available in a number of standard sizes and meets the stringent hygiene standard imposed both by control authorities and industry.

The Pharma-line S is available in 21 models, all with U-tube designs that suit most applications.

Within the product range Pharma-line there are 2 series available:

Pharma-line S - Standard design

Pharma-line P - Standard design and a custom design available on request

Installation

The movable legs facilitate flexible positioning. The Pharma-line S can be installed either horizontally or vertically, depending on the specific demands. For an easy installation, lifting lugs are fastened on the units.

TECHNICAL DATA

Heat transfer area: . . . 0.1 m² – 4 m²
 Design temperature: . . -10°C -150°C
 Design pressure: FV/10 barg
 Pressure vessel codes: PED. Chinese TSG and manufacturing license available
 Welding: according to SS-EN-ISO 15614-1, EN 287-1, EN-1418 ASME IX
 Surface finish product wetted parts: Mechanically polished with Ra<0.5 µm. and Electropolish with Ra<0.4 µm

Options:

- Insulation Mineral wool (ASTM C795) with stainless steel 304 cladding

Hygienic design

The Pharma-line S has no dead legs and is fully drainable on the product side. All product wetted parts in Pharma-line S are either mechanically or electropolished. The Pharma-line S tubes are seamless and U-tubes are bent to a larger radius than required in ASME BPE. The Pharma-line S is easy to clean and can be steam sterilized. Gaskets come with a USP class VI certificate and are in compliance with FDA.

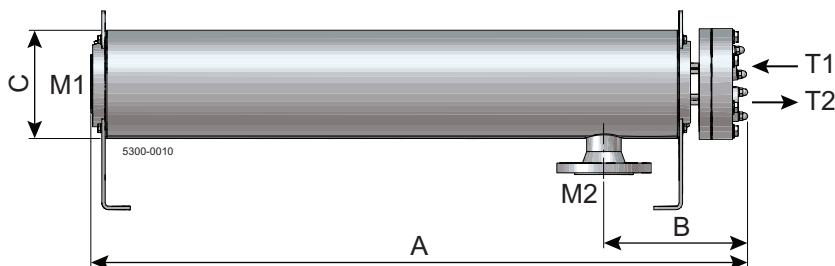
Documentation

The Pharma-line is delivered along with Alfa Laval Q-Doc including:

- Approved drawings and calculations signed by Notified body
- List of welders, welding procedure and welder qualification
- 3.1 Material certificates, pressure and product wetted steel parts
- FDA compliance and USP class VI certificates, gaskets
- Liquid penetrant test report and procedure
- Surface roughness certificate
- Dimension control report
- Pressure test certificate, signed by Notified body
- Identification (technical sign)
- Quality system certificate
- CE-Documents

Standard units, measurements (approximate) [mm]

Type	Shell OD (mm)	Nozzles size		A	B	C
		Tube	flange			
Pharma-line S 1 [mm]						
Pharma-line S 1 - 0.1	76	1"	DN50	1150	225	195
Pharma-line S 1 - 0.3	89	1"	DN50	1150	225	195
Pharma-line S 1 - 0.4	101	1"	DN50	1150	225	195
Pharma-line S 1 - 0.6	114	1 1/2"	DN50	1150	230	195
Pharma-line S 1 - 0.7	141	2"	DN80	1150	260	245
Pharma-line S 1 - 1.1	141	2"	DN80	1150	260	245
Pharma-line S 1 - 1.2	168	2"	DN80	1150	260	245
Pharma-line S 2 [mm]						
Pharma-line S 2 - 0.3	76	1"	DN50	2150	225	195
Pharma-line S 2 - 0.6	89	1"	DN50	2150	225	195
Pharma-line S 2 - 1.0	101	1"	DN50	2150	225	195
Pharma-line S 2 - 1.3	114	1 1/2"	DN50	2150	230	195
Pharma-line S 2 - 1.4	141	2"	DN80	2150	260	245
Pharma-line S 2 - 2.4	141	2"	DN80	2150	260	245
Pharma-line S 2 - 2.6	168	2"	DN80	2150	260	245
Pharma-line S 3 [mm]						
Pharma-line S 3 - 0.4	76	1"	DN50	3150	225	195
Pharma-line S 3 - 1.0	89	1"	DN50	3150	225	195
Pharma-line S 3 - 1.6	101	1"	DN50	3150	225	195
Pharma-line S 3 - 2.0	114	1 1/2"	DN50	3150	230	195
Pharma-line S 3 - 2.2	141	2"	DN80	3150	260	245
Pharma-line S 3 - 3.7	141	2"	DN80	3150	260	245
Pharma-line S 3 - 4.0	168	2"	DN80	3150	260	245



Nozzle schedule

Item	Service	Facing	Standard and dimension
T1	Tube inlet	NAC plate for Tri-clamp	Suitable for ASME BPE
T2	Tube outlet	NAC plate for Tri-clamp	Suitable for ASME BPE
M1	Shell inlet	Weld neck flange	DIN2635/EN1092-1
M2	Shell outlet	Weld neck flange	DIN2635/EN1092-1

- | | | | |
|-----------------------------|---------------------------------|--------------------------------|---------------------------|
| Архангельск (8182)63-90-72 | Казань (843)206-01-48 | Новокузнецк (3843)20-46-81 | Смоленск (4812)29-41-54 |
| Астана +7(7172)727-132 | Калининград (4012)72-03-81 | Новосибирск (383)227-86-73 | Сочи (862)225-72-31 |
| Астрахань (8512)99-46-04 | Калуга (4842)92-23-67 | Омск (3812)21-46-40 | Ставрополь (8652)20-65-13 |
| Барнаул (3852)73-04-60 | Кемерово (3842)65-04-62 | Орел (4862)44-53-42 | Сургут (3462)77-98-35 |
| Белгород (4722)40-23-64 | Киров (8332)68-02-04 | Оренбург (3532)37-68-04 | Тверь (4822)63-31-35 |
| Брянск (4832)59-03-52 | Краснодар (861)203-40-90 | Пенза (8412)22-31-16 | Томск (3822)98-41-53 |
| Владивосток (423)249-28-31 | Красноярск (391)204-63-61 | Пермь (342)205-81-47 | Тула (4872)74-02-29 |
| Волгоград (844)278-03-48 | Курск (4712)77-13-04 | Ростов-на-Дону (863)308-18-15 | Тюмень (3452)66-21-18 |
| Вологда (8172)26-41-59 | Липецк (4742)52-20-81 | Рязань (4912)46-61-64 | Ульяновск (8422)24-23-59 |
| Воронеж (473)204-51-73 | Магнитогорск (3519)55-03-13 | Самара (846)206-03-16 | Уфа (347)229-48-12 |
| Екатеринбург (343)384-55-89 | Москва (495)268-04-70 | Санкт-Петербург (812)309-46-40 | Хабаровск (4212)92-98-04 |
| Иваново (4932)77-34-06 | Мурманск (8152)59-64-93 | Саратов (845)249-38-78 | Челябинск (351)202-03-61 |
| Ижевск (3412)26-03-58 | Набережные Челны (8552)20-53-41 | Севастополь (8692)22-31-93 | Череповец (8202)49-02-64 |
| Иркутск (395) 279-98-46 | Нижний Новгород (831)429-08-12 | Симферополь (3652)67-13-56 | Ярославль (4852)69-52-93 |

Киргизия (996)312-96-26-47 Казахстан (772)734-952-31 Таджикистан (992)427-82-92-69

Эл. почта: afm@nt-rt.ru || Сайт: <http://alfa-laval.nt-rt.ru>